

Construction of new storage building on State Game Lands 258 in Liverpool TWP., Perry County, PA

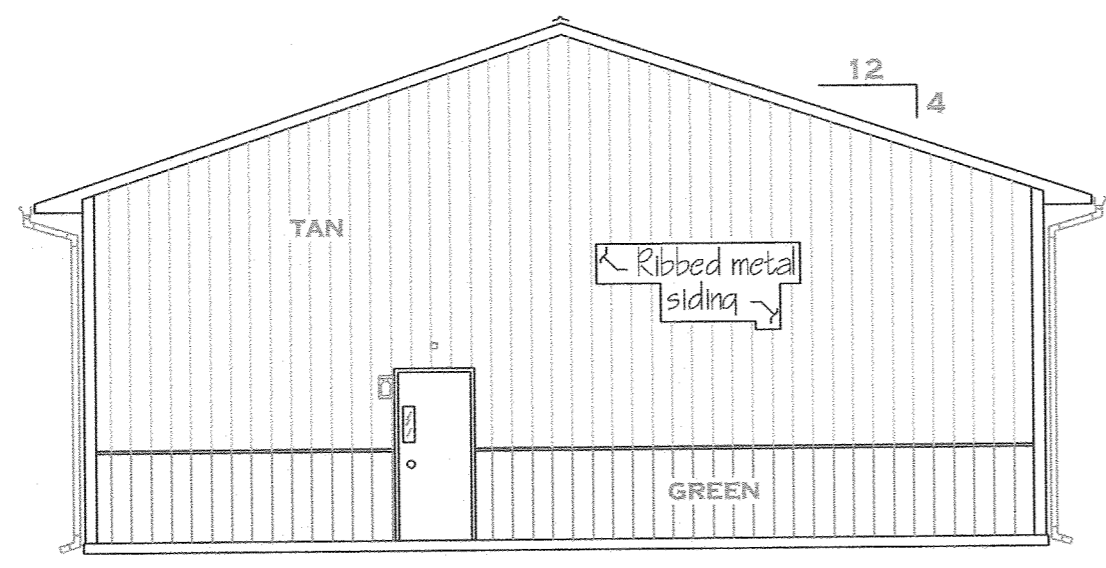
Code Chapter 3 Use and Occupancy Classification 312.1 Buildings/ structures of an accessory character/ misc.

6 Type of Construction Table 601 Type VB

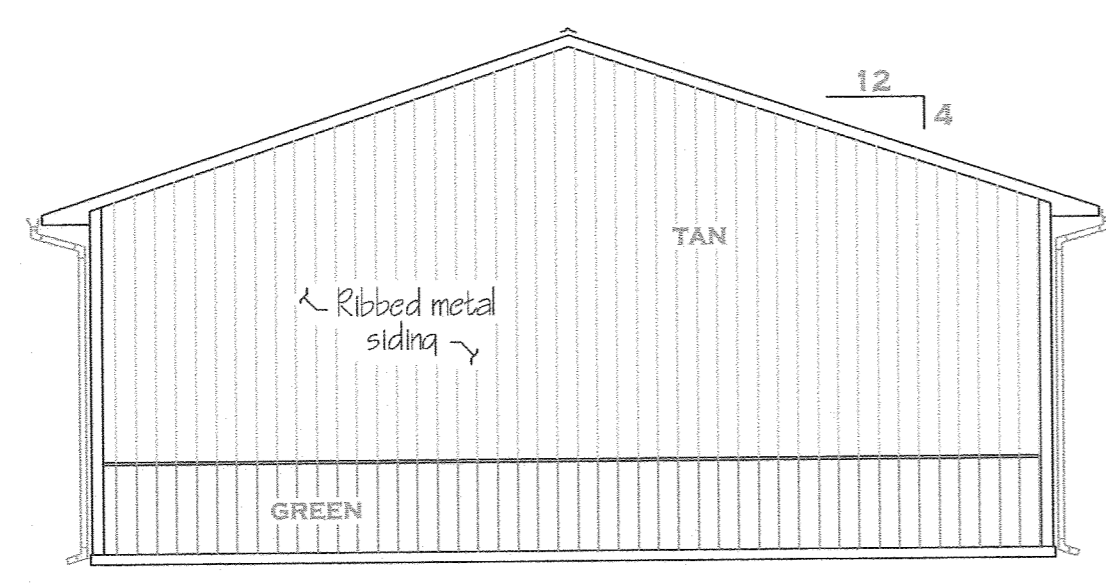
10 Means of Egress Table 1004.1 Max floor area per Occupant Group Occ. Factor SqFt. Occupancy Storage 300 gross 3,200 10

11 Accessibility Not required (Agricultural Building)

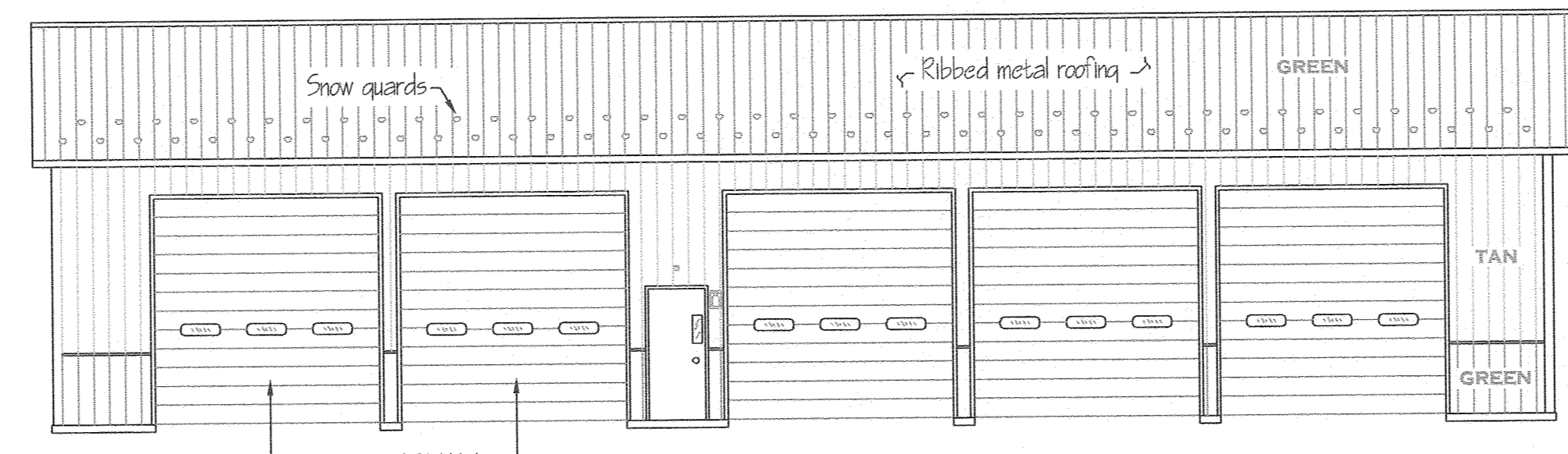
13 Energy Efficiency 101.5.2 Exemption (Low Energy Building)



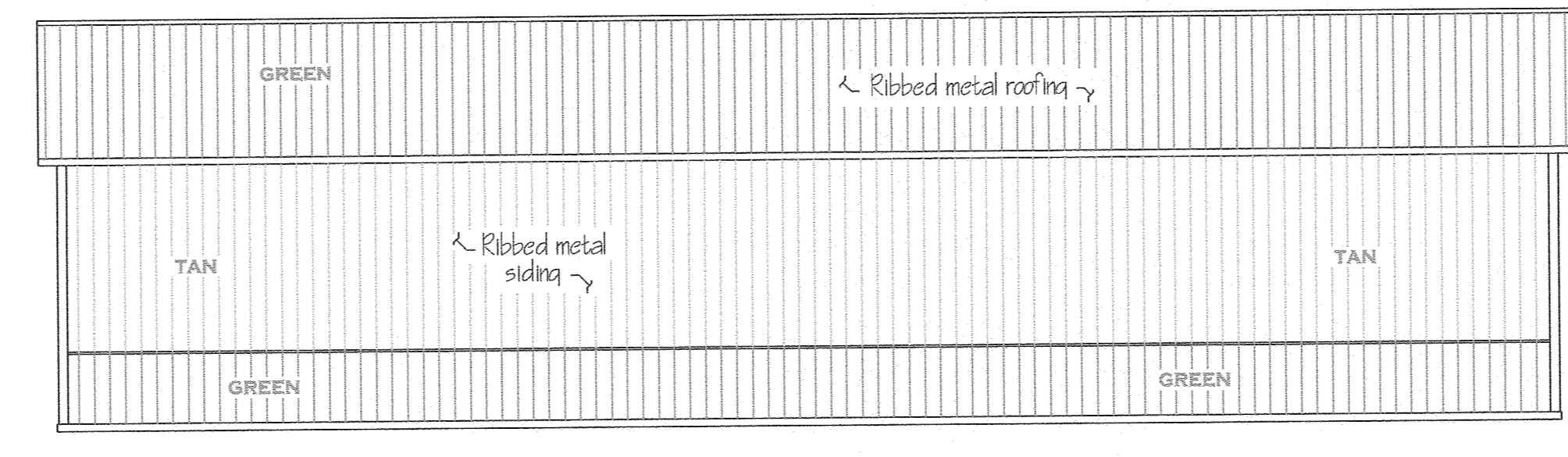
RIGHT ELEVATION
SCALE: 1/8" = 1'-0"



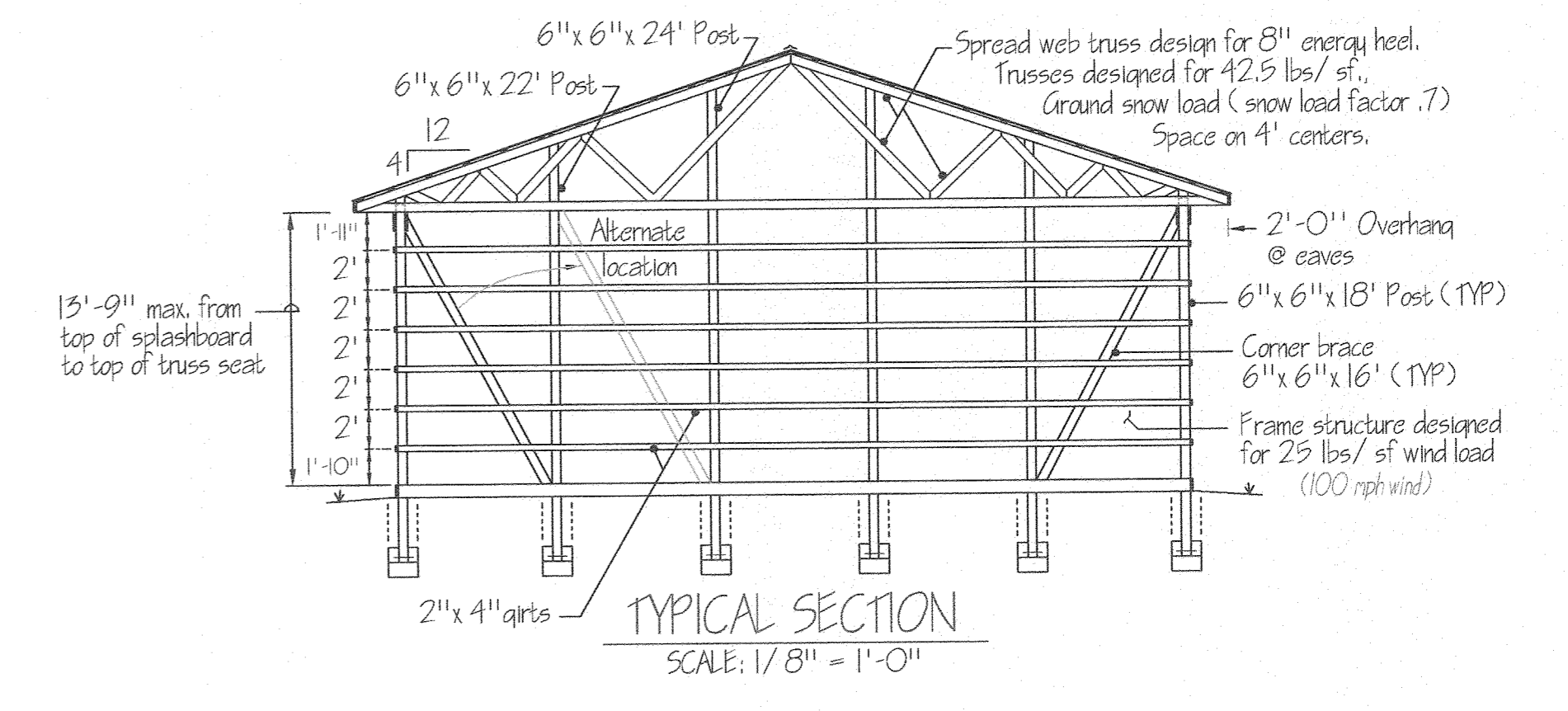
LEFT ELEVATION
SCALE: 1/8" = 1'-0"



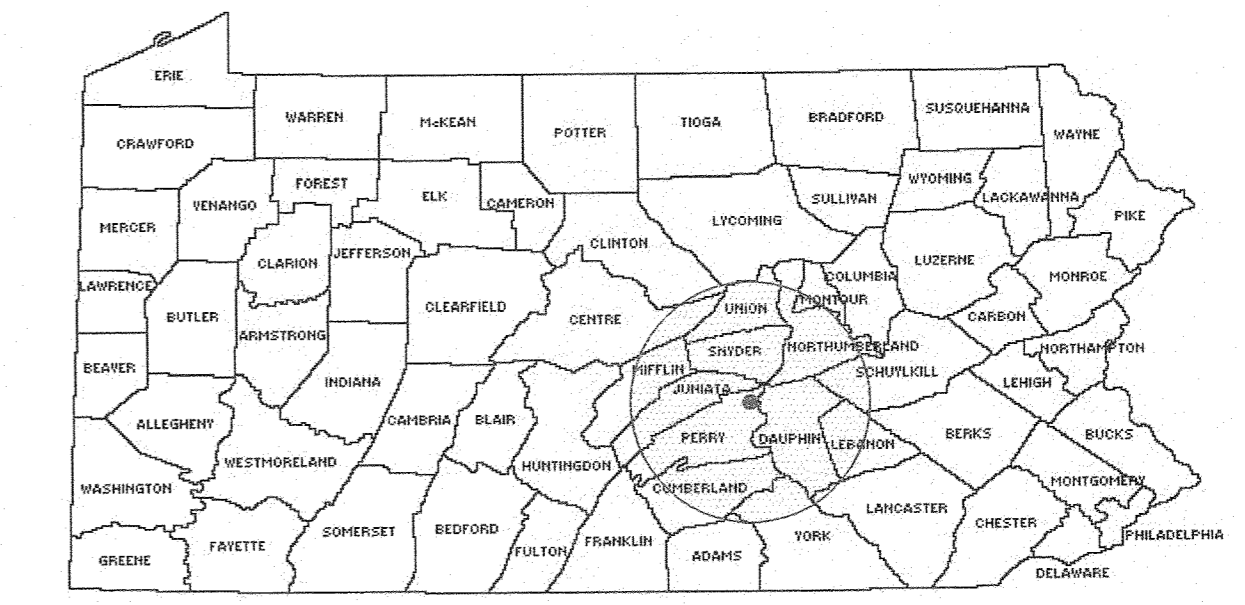
FRONT ELEVATION
SCALE: 1/8" = 1'-0"



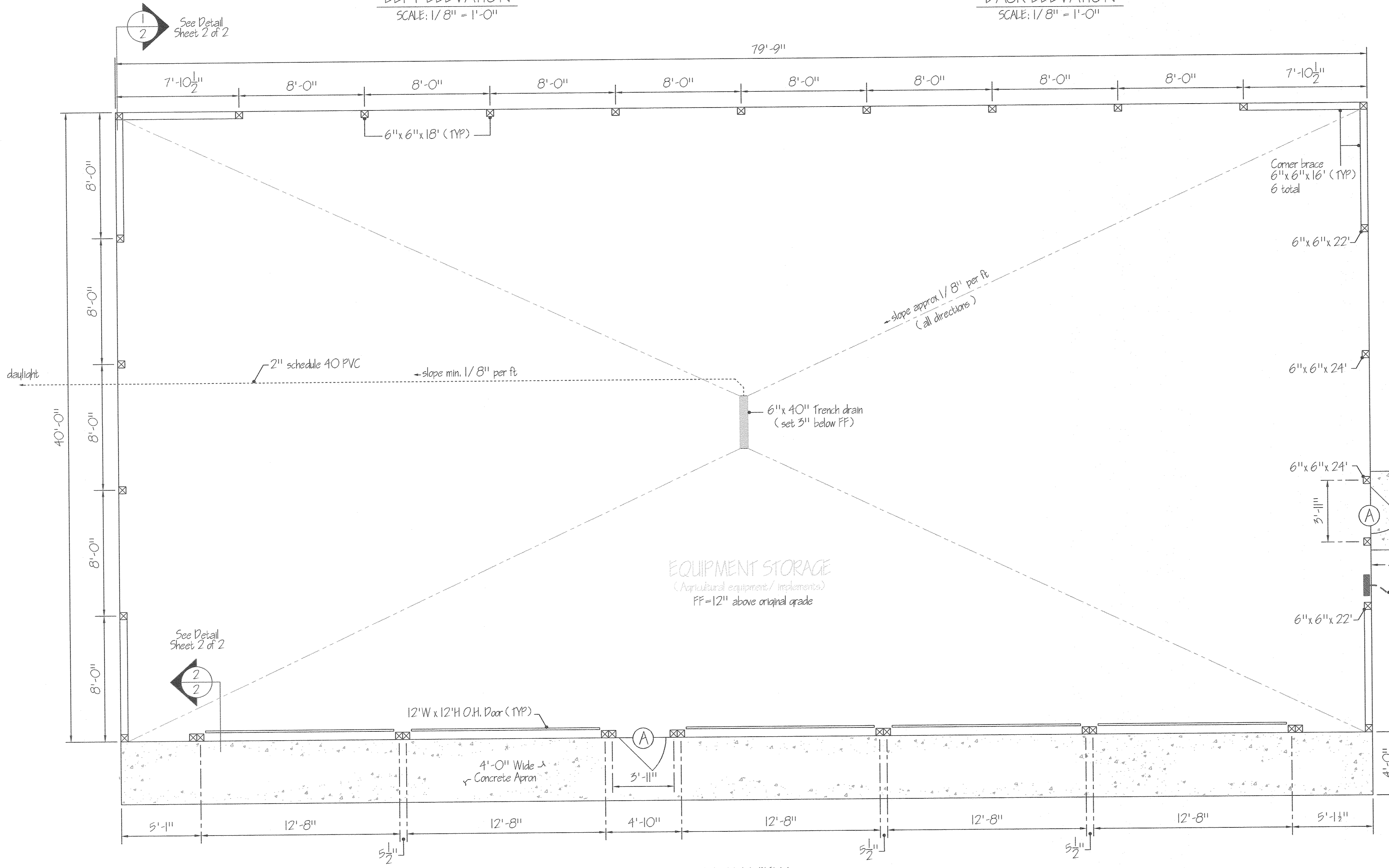
BACK ELEVATION
SCALE: 1/8" = 1'-0"



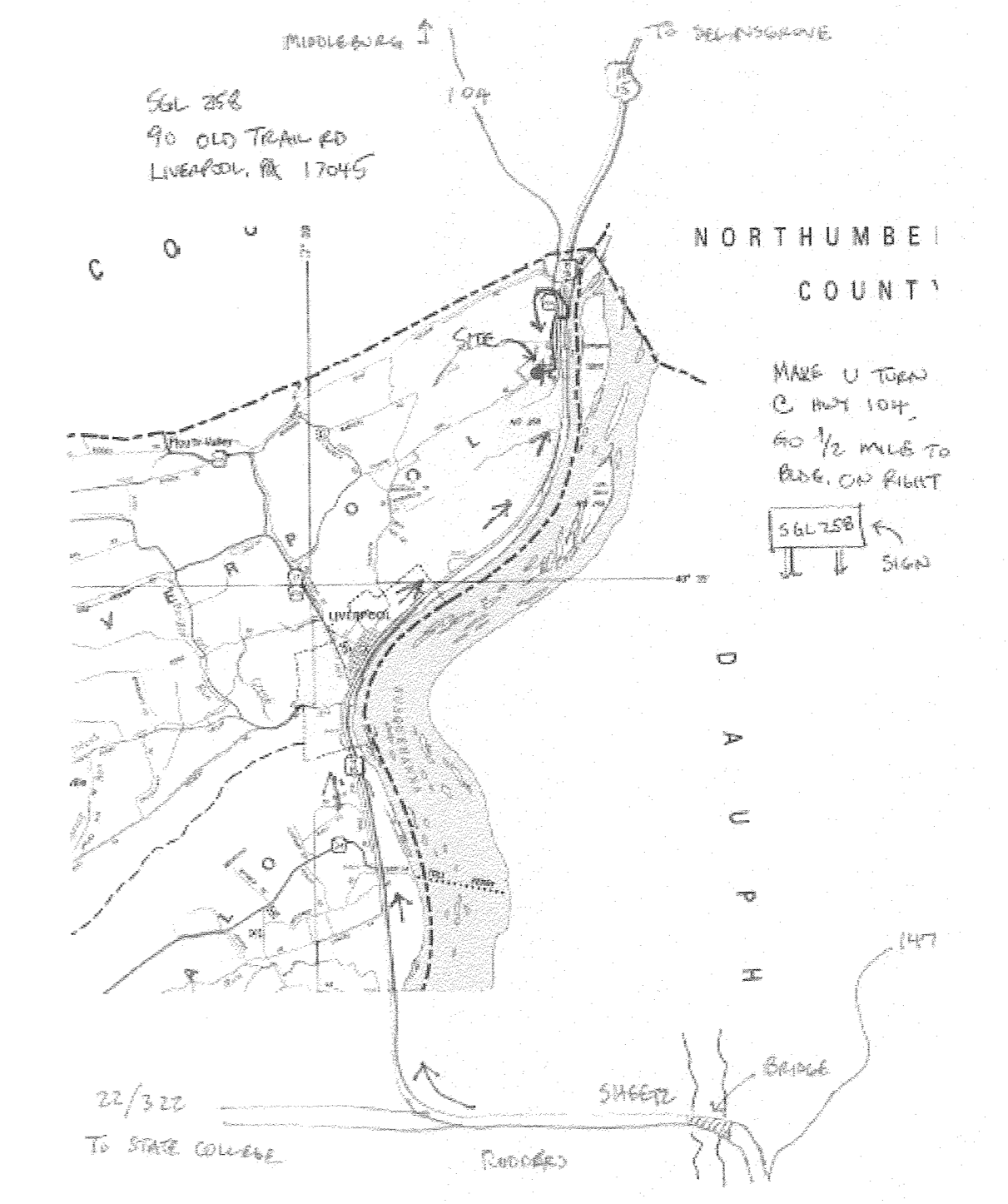
TYPICAL SECTION
SCALE: 1/8" = 1'-0"



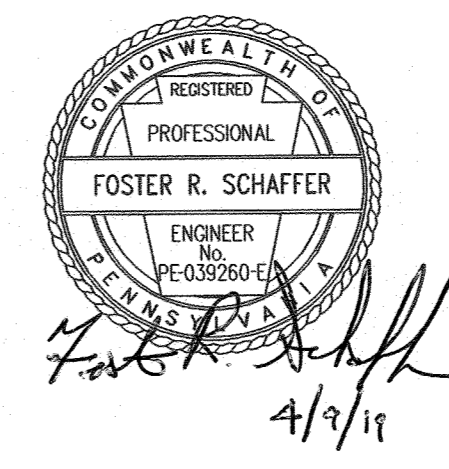
LOCATION MAP
NOT TO SCALE



PLAN VIEW
SCALE: 1/4" = 1'-0"



VICINITY MAP
NOT TO SCALE



PENNSYLVANIA GAME COMMISSION		
STATE GAME LANDS NO. 258	LIVERPOOL TWP	PERRY COUNTY
PLAN VIEW AND ELEVATIONS FOR 40' X 80' POLE BUILDING		
REVISIONS		PROJECT NO. POC-258-18-01
△		DRAWING NO. 258-1
△		DRAWN BY: JBM
△		DATE: 02/21/19
△		SHEET NO. 1 OF 3